



29 Myrtle Road

, Stockton-On-Tees, TS19 0JW

Offers in excess of £50,000



For Sale With The Advantage Of No Onward Chain & Vacant Possession! uPVC Double Glazing & Combi Gas Central Heating Throughout. An Ideal Investment Opportunity With Potential Tenants Waiting.



ENTRANCE HALLWAY

LIVING ROOM
13'9 x 12'8 (4.19m x 3.86m)

KITCHEN
16'2 x 7'9 (4.93m x 2.36m)

FIRST FLOOR LANDING

BEDROOM ONE
11'7 x 9'9 (3.53m x 2.97m)

BEDROOM TWO
10'2 x 9'7 (3.10m x 2.92m)

FAMILY BATHROOM

OUTHOUSE

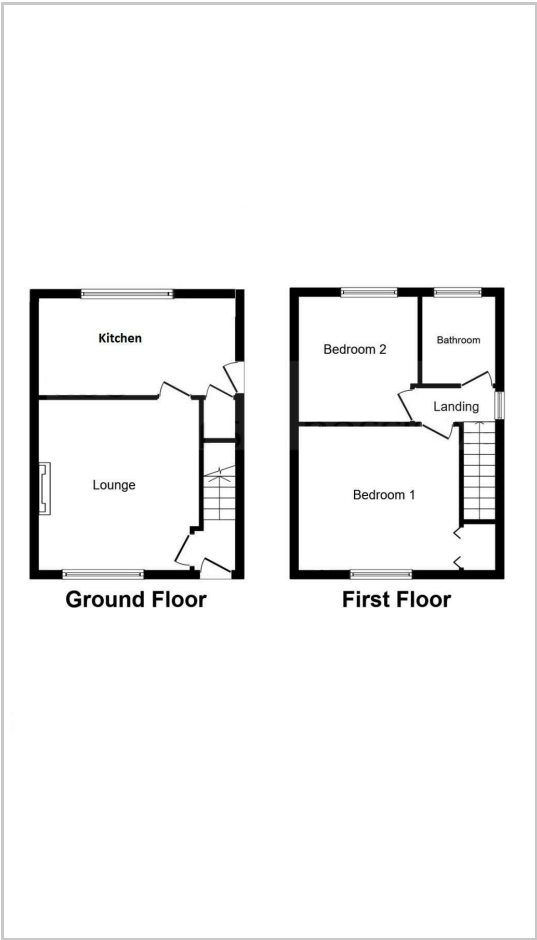
EXTERNALLY

ENERGY EFFICIENCY RATING: D

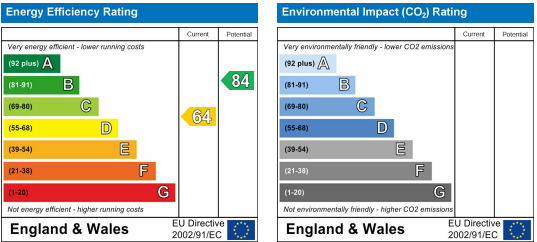
Area Map



Floor Plans



Energy Efficiency Graph



These particulars, whilst believed to be accurate are set out as a general outline only for guidance and do not constitute any part of an offer or contract. Intending purchasers should not rely on them as statements of representation of fact, but must satisfy themselves by inspection or otherwise as to their accuracy. No person in this firms employment has the authority to make or give any representation or warranty in respect of the property.